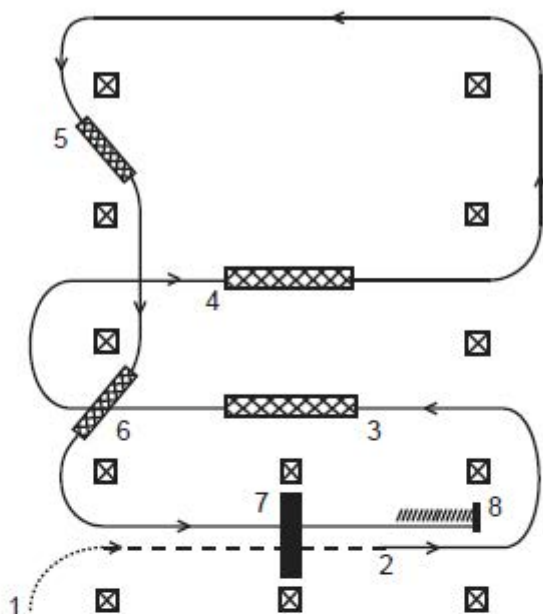


126. Pattern B – Level I Western Riding



Walk: ..... Lope: \_\_\_\_\_  
 Back: //////////////// Jog: - - - - -  
 Lead Changing Area: XXXXXXXXX

Simple lead changes are required, flying changes to be penalized. See rules 118 and 124.B.8.

1. Walk, transition to jog, jog over log.
2. Transition to lope.
3. First crossing change.
4. Second crossing change.
5. First line change.
6. Second line change.
7. Lope over log.
8. Stop and back.

This pattern could be used for level 1 when choosing Western Riding Pattern Number 2.