



4-H Dog Project Class Progression



Obedience, Rally & Showmanship

Key Points and 2023 Updates

OBEDIENCE

Pre-Beginner Novice

Beginner Novice

Novice

Pre-Grad Novice

Grad Novice

Open

Grad Open

Utility



RALLY

Novice

Intermediate

Advanced

Excellent

Advanced/Excellent

Masters

SHOWMANSHIP

Junior Novice

Junior Open

Intermediate Novice

Intermediate Open

Intermediate Advanced *(placed 1st-10th at State)*

Senior Novice

Senior Open

Senior Advanced *(placed 1st-10th at State)*

Masters *(Grand or Reserve Grand Champ at State)*



“A”

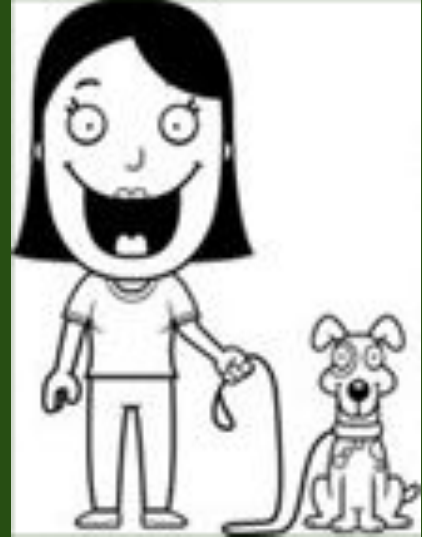


All “A” level Obedience and Rally classes are for exhibitors and dogs who do not have any experience showing a dog in that particular class. If the project member and/or dog has ever received a qualifying score in a particular “A” level class and decides to show a new dog, the member must enter the “B” level for that class.

4-H Dog Project members progressing through the class levels for the first time with their first dog should be in “A” level classes.

If they don’t receive a Q score, they will repeat the class in the “B” level.

Existing 4-H Dog Project members showing a new, second dog in a class their previous dog never attempted can be in the “A” level class.



“B”

All “B” level Obedience and Rally classes are for exhibitors or dogs with previous experience in a particular class OR exhibitors and dogs who did not earn a qualifying score in that class the previous year.



Members who did not receive a qualifying score in their “A” level class will repeat that same class the following year in the “B” level. They will remain in that “B” level class until they receive a Q score.

If either the exhibitor or the dog has previously received a qualifying score in a class, any subsequent dogs or handlers must enter the “B” level for that particular class.

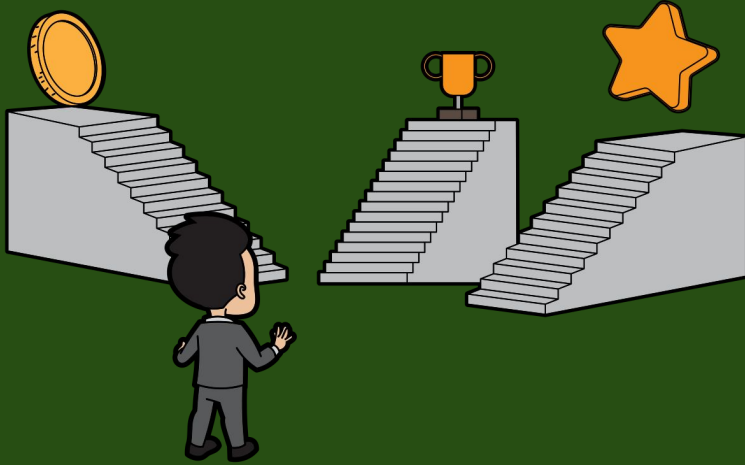


There no longer are any “C” Level
class. Experienced dogs or
exhibitors should enter the “B” level
classes.



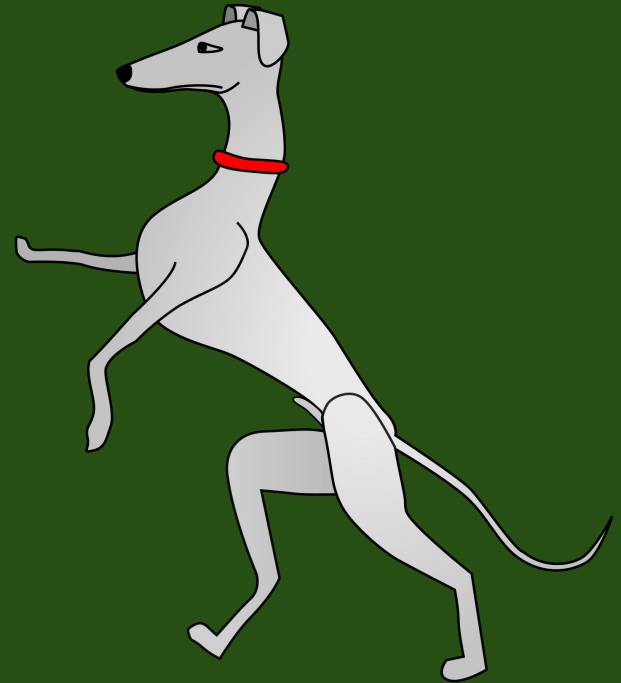
“C”

Exhibitors who qualified in Beginner Novice A or C1 last year should be placed in the NEW Beginner Novice A or B class this year.



Exhibitors who qualified in Beginner Novice B or C2 last year will be placed in Novice A or B this year.

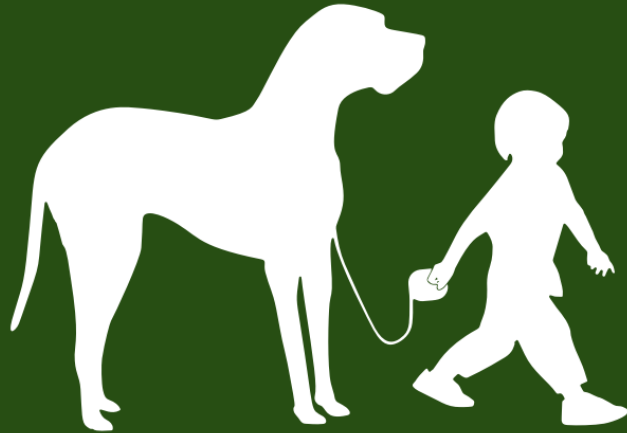
If a Dog Project member receives a title from a national dog organization such as AKC or UKC, they are not eligible to show in that same class in 4-H, unless the title was earned LESS THAN 4 months prior to the State Dog Contest.



EXAMPLES

Joey and his pup Spot are starting their first year of the 4-H Dog Project. Which Obedience and Rally class and level would you place them in?

~~~~~



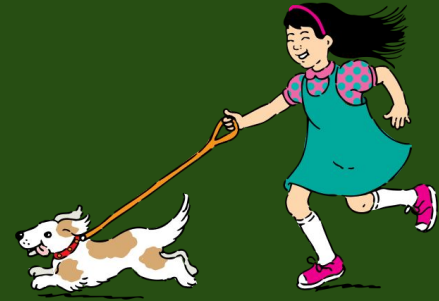
Sarah and her pup Bingo did NOT qualify in Novice Obedience A this year. Which Obedience class and level would you place them in next year?

Emmett and his dog **Martha** have received qualifying scores in Novice Obedience A & Intermediate Rally A, but did not progress any further. Emmett is starting a new dog named **Phil** this year. Which Obedience and Rally class and level would you place Emmett and Phil in?



Emmett and his new dog **Phil** have received qualifying scores in Novice Obedience and Intermediate Rally. Which Obedience and Rally class and level would you place them in next year? (*Tricky question!*)

Emmett's sister Nina just enrolled in the Dog Project and will be working with **Martha** this year. Which Obedience and Rally class and level would you place Nina and **Martha** in?



# SHOWMANSHIP PROGRESSION

Showmanship progression is based on the exhibitor's 4-H age and years of participation in Showmanship.



Junior = ages 8-10  
Intermediate = ages 11-13  
Senior = ages 14-18



First year exhibitors are Novice level  
Second or more year exhibitors are Open level

Intermediate Advanced & Senior Advanced  
Showmanship levels are determined by class  
placement at State Fair.

Exhibitors with Q scores placing 1st-10th in  
Intermediate or Senior Open must move to the  
Advanced Showmanship class.

Exhibitors who place as Grand or Reserve  
Grand Champions in Intermediate or Senior  
Showmanship must move to the Master  
Showman class.



If a 4-H exhibitor has been showing in AKC/UKC Junior Showmanship or Conformation, they should be placed in an “Open” 4-H showmanship class.



If that exhibitor has ever won “Best Junior Handler” or a comparable title from a national dog organization, the 4-H leader may place them in the 4-H “Advanced” or “Masters” Showmanship class according to their skill level.



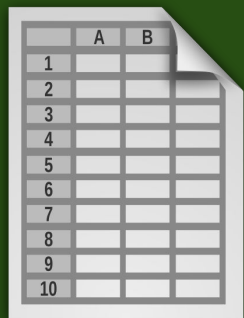
## Tracking Exhibitors and Dogs

4-H Dog Project classes are sequential so it is important to keep track of which class and level each exhibitor completes with each dog.

This will also ensure each exhibitor/dog team is placed in the correct training class at the beginning of the 4-H year. Depending on the size of your group, you can create a spreadsheet for each year, or just create a word document.







For Obedience and Rally: Track Q scores for each exhibitor and dog at both County and State Dog Contests

For Showmanship: Track exhibitor's 4-H age (*Junior, Intermediate, Senior*) and number of years exhibiting in Showmanship (*Novice, Open*). Also, track Placement at the State Dog Contest to determine Advanced or Masters assignment.

## Who decides whether an exhibitor moves up?



That decision is up to the County. BUT if the exhibitor receives a qualifying score in an Obedience or Rally class at the State Dog Contest, they MUST advance to the next level. Similarly, if an exhibitor places 1st-10th in their Intermediate or Senior Open class at the State Contest, they MUST move to the Advanced Showmanship class. Exhibitors who win Grand or Reserve Grand Champion in Intermediate or Senior Showmanship at the State Contest MUST move in to the Master Showman class.

Class Progression  
Charts for  
Obedience, Rally,  
Showmanship and  
Agility - along with  
other great dog  
project resources -  
can be found on the  
Colorado 4-H  
Website under State  
Fair Information.



COLORADO STATE UNIVERSITY  
EXTENSION

Updated 11/28/2022

## Colorado 4-H Dog Level Progression Chart

### 4-H Dog Obedience Class Placement\*

| Division                 | Class Name            | Class Registration Eligibility                                                                                                                                                                                                                                                                                                                                                                                                                                                                                                              | Class Registration Progression                                                                                                                                                                                                                                                                                              |
|--------------------------|-----------------------|---------------------------------------------------------------------------------------------------------------------------------------------------------------------------------------------------------------------------------------------------------------------------------------------------------------------------------------------------------------------------------------------------------------------------------------------------------------------------------------------------------------------------------------------|-----------------------------------------------------------------------------------------------------------------------------------------------------------------------------------------------------------------------------------------------------------------------------------------------------------------------------|
| Puppy Division           | Puppy Class           | <p><b>*NOT A STATE 4-H DOG TRIALS CLASS BUT HIGHLY ENCOURAGED IN COUNTIES*</b></p> <p>For puppies or dogs which are not ready for regular obedience classes. The purpose of this class will be to introduce obedience commands to a puppy/dog without the stress of perfection seen in regular obedience classes. This class will introduce the puppy/dog to dog shows in a positive manner, thus setting the puppy/dog up for a lifetime of enjoyment in the show ring.</p>                                                                | After one year of showing in the Puppy Obedience Class: If the member was in their 1st year of obedience training, the team moves into Pre-Beginner Novice A Obedience, if the member was in their 2nd year or higher of obedience training, the team moves to Pre-Beginner Novice B Obedience                              |
|                          | Pre-Beginner Novice A | This class is open only to exhibitors and their dogs in their <b>first year</b> of dog Obedience training work.                                                                                                                                                                                                                                                                                                                                                                                                                             | Exhibitors and their dog can only compete in this class for 1 year.<br><br>After their first year the team <b>MUST</b> move Pre-Beginner Novice B or higher to be eligible for State 4-H Dog Trials.                                                                                                                        |
| Beginner Novice Division | Pre-Beginner Novice B | <p>This class is open to exhibitors or dogs with previous experience in Pre-Beginner Novice Obedience training <b>OR</b> exhibitors and dogs who did <b>not</b> earn a qualifying score in Pre-Beginner Novice A Obedience.</p> <p>*If you showed in, but did not qualify in Beginner Novice A or C1 at the County Level or State 4-H Dog Trials in 2022, you will be placed in Pre-Beginner Novice B Class for the 2022-2023 4-H Year.</p>                                                                                                 | Exhibitor and dog teams may stay in this class until they receive a qualifying score at County Level <sup>2</sup> or State 4-H Dog Trials. Once a dog has received a qualifying score at County Level or State 4-H Dog Trials they <b>MUST</b> move to Beginner Novice A or higher to be eligible for State 4-H Dog Trials. |
|                          | Beginner Novice A     | <p>This class is open to exhibitors in their 1st year of Beginner Novice training with no prior experience in Beginner Novice Obedience Dog training.</p> <p>Exhibitor and dog teams are encouraged to enter this class only after successful completion of the Pre-Beginner Novice Class <b>OR</b> with approval of their County Dog Superintendents.</p> <p>*If you qualified in Beginner Novice A at the County Level or State 4-H Dog Trials in 2022, you will move to this new Beginner Novice A class for the 2022-2023 4-H Year.</p> | Exhibitors can only compete in this class for 1 year.<br><br>After their first year the team <b>MUST</b> move to Beginner Novice B or higher to be eligible for State 4-H Dog Trials.                                                                                                                                       |
|                          | Beginner Novice B     | <p>This class is open to exhibitors or dogs with previous experience in Beginner Novice Obedience training <b>OR</b> exhibitors and dogs who did <b>not</b> earn a qualifying score in Beginner Novice A Obedience.</p> <p>*If you qualified in Beginner novice C1 at the County Level or State 4-H Dog Trials in 2022, you will move to the Beginner Novice B Class for the 2022-2023 4-H Year.</p>                                                                                                                                        | Exhibitor and Dog teams may stay at this level until they receive a qualifying score at County Level <sup>2</sup> or State 4-H Dog Trials. Once a dog has received a qualifying score at County Level or State 4-H Dog Trials they <b>MUST</b> move to Novice A or higher to be eligible for State 4-H Dog Trials.          |
|                          | Beginner Novice C     |                                                                                                                                                                                                                                                                                                                                                                                                                                                                                                                                             |                                                                                                                                                                                                                                                                                                                             |

**QUESTIONS?**