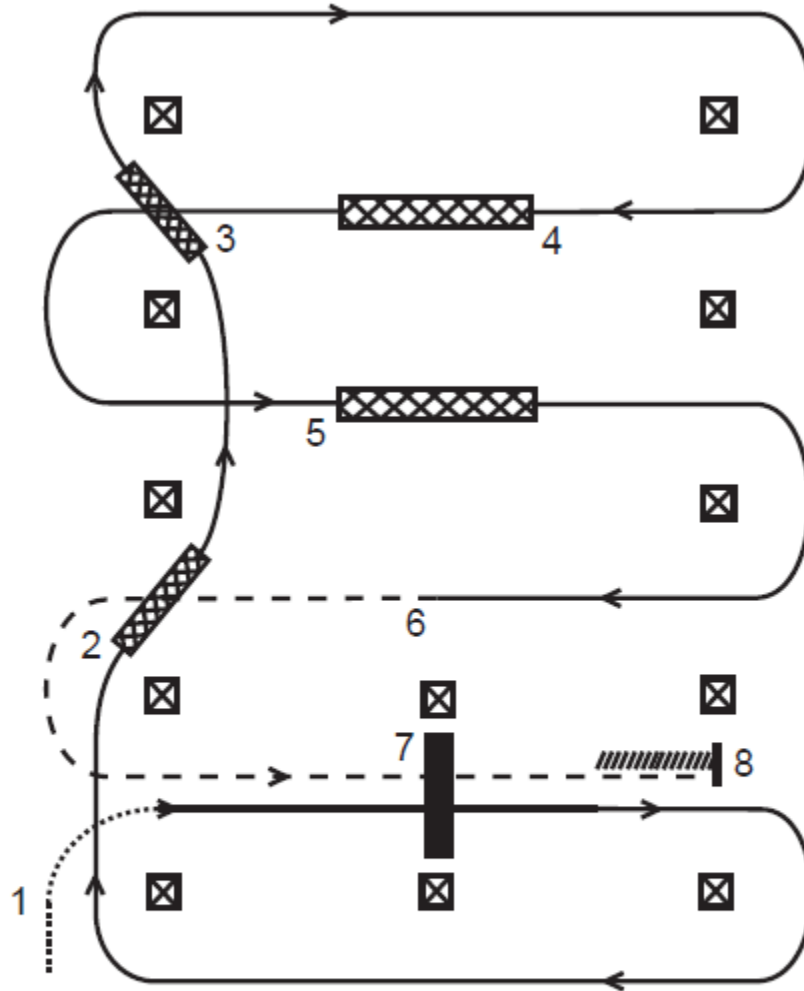


## Western Riding Level 1 Pattern C



Walk: .....      Lope: \_\_\_\_\_  
 Back: ///////////////      Jog: - - - - -  
 Lead Changing Area: XXXXXXXX

Simple lead changes are required, flying changes to be penalized. See rules 118 and 124.B.8.

1. Walk, transition to lope, lope over log.
2. First line change.
3. Second line change.
4. First crossing change.
5. Second crossing change.
6. Transition to jog.
7. Jog over log.
8. Stop and back.

This pattern could be used for level 1 when choosing Western Riding Pattern Number 4.