



COLORADO STATE UNIVERSITY
EXTENSION

4-H



HOME DESIGN AND DECOR' UNITS 1-4

Home Design and Decor'

Unit 1

- Learn about recycling and reusing items.
- Recognize beauty in natural products
- Discover personal space.
- Share talents acquired through demonstrations and exhibits.

Unit 2

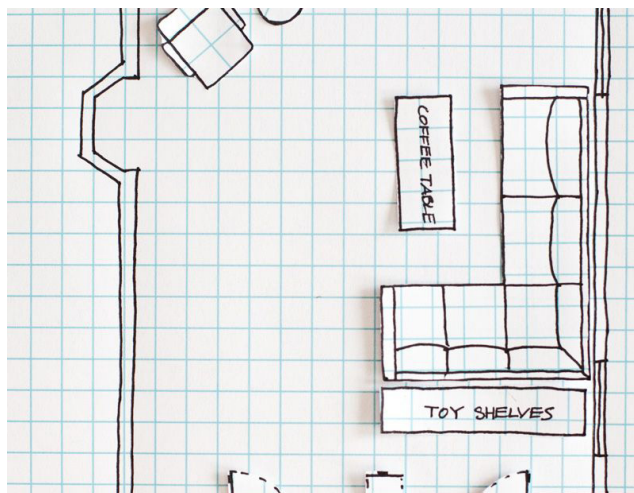
- Create useful household items
- Learn about safety in the home and how to do an escape plan
- Share talents acquired through demonstrations and exhibits.

Unit 3

- Learn how to refinish or refurbish a piece of furniture
- Learn about window treatment
- Prepare for severe weather
- Share talents acquired through demonstrations and exhibits.

Unit 4

- Learn about careers in Interior Design
- Learn how to build a portfolio
- Study a career in Interior Design by Job Shadowing
- Learn how to create a design board
- Share talents acquired through demonstrations and exhibits.





COLORADO STATE UNIVERSITY
EXTENSION

4-H



HOME DESIGN AND DECOR UNITS 1-4

Home Design and Decor Requirements per Unit (be sure to check current State Fair Exhibit Requirements for additional requirements):

- Unit 1- Select one of the following using at least 50 percent recycled or reused items (no furniture). 1. Using recycled material to make one of the following: a. Bird feeder or Birdhouse; b. Wind Chime; c. Picnic Caddy. OR 2. Using at least 50% recycled or reused items (no furniture) to make one of the following items to be used inside the house: a. Centerpiece for table; b. Planter; c. room or desk organizer; d. Decorative accessory for the home (see description in the State Fair Exhibit Requirements); e. Household item (see definition); Wall Hanging (3x 2). Completed Activity 2 --color wheel from the manual placed in the e-record.
- Unit 2 -One item or set from the following: 1. Communication Board (3 x 2); 2. Room or desk organizer; 3. A wall hanging (3 x 2); 4. Decorative accessory; 5. Household item (see definition); 6. Family escape plan. Tow or more exhibit photos showing item in place where it will be used and as a part of the total room design. These are in addition to the photos required in the e-record. A statement on how you improved your family's safety or a family escape plan.
- Unit 3 --Select one of the following for an exhibit:
 - 1. A refinished or refurbished piece of furniture. Attach pictures showing the original piece, one during the refinishing or refurbishing process, and one of the completed pieces. These photos are in addition to the photos required in the e-record. A brief description of how the piece(s) fit into the room placed in the e-record.
 - OR
 - 2. Select from one of the items below to exhibit: a. a brief description of the window treatment or bedcovering you made or purchased that includes how it fits into the design of the room and if purchased why? b. Attach up to 4 photos showing the exhibited item(s) in use in the room. These are in addition to the photos required in the e-record.
 - OR
 - 3. An emergency weather plan for your family. Where would you go? What type of items would you have in case of emergency? What personal items would you take with you? Place the emergency plan in the e-record.
- Unit 4 - Select one from the following for an exhibit:
 - 1. Design board (art board, corrugated plastic, etc.) 22" x30". Foam core or foam board for mounting samples. The design board will include samples of paint, fabric, flooring, etc., for the room you are designing.
 - OR
 - 2. Job Shadow Exhibit --display board (3' x 4') demonstrating what profession you are interested in and who you job-shadowed (profession, job title of person shadowing, what you learned from the experience, and if you still want to be in the profession, why or why not?) Include pictures or any record you have kept providing evidence of your job shadow experience.
 - OR



COLORADO STATE UNIVERSITY
EXTENSION

4-H



HOME ENVIRONMENT UNITS 1-4

- 3. Portfolio Exhibit --a. A physical representation of the career or business product such as a model, prototype or display/portfolio that includes images of accomplished work. b. Written explanation that demonstrates knowledge of the related career or business field, potential careers, and the appropriate requirements for achievement in that field.

Judging Criteria:

- Completeness of the e-record related to your project.
- Include in your e-record demonstrations, talks, story and pictures with at least one action shot of you working on your project.
- Neatness and legibility
- Community service project-related to your project if possible
- Quality of exhibit
- Be sure to add additional photos where required.

Resources

State Fair Exhibit Requirements

Home Design and Decor Tip Sheet